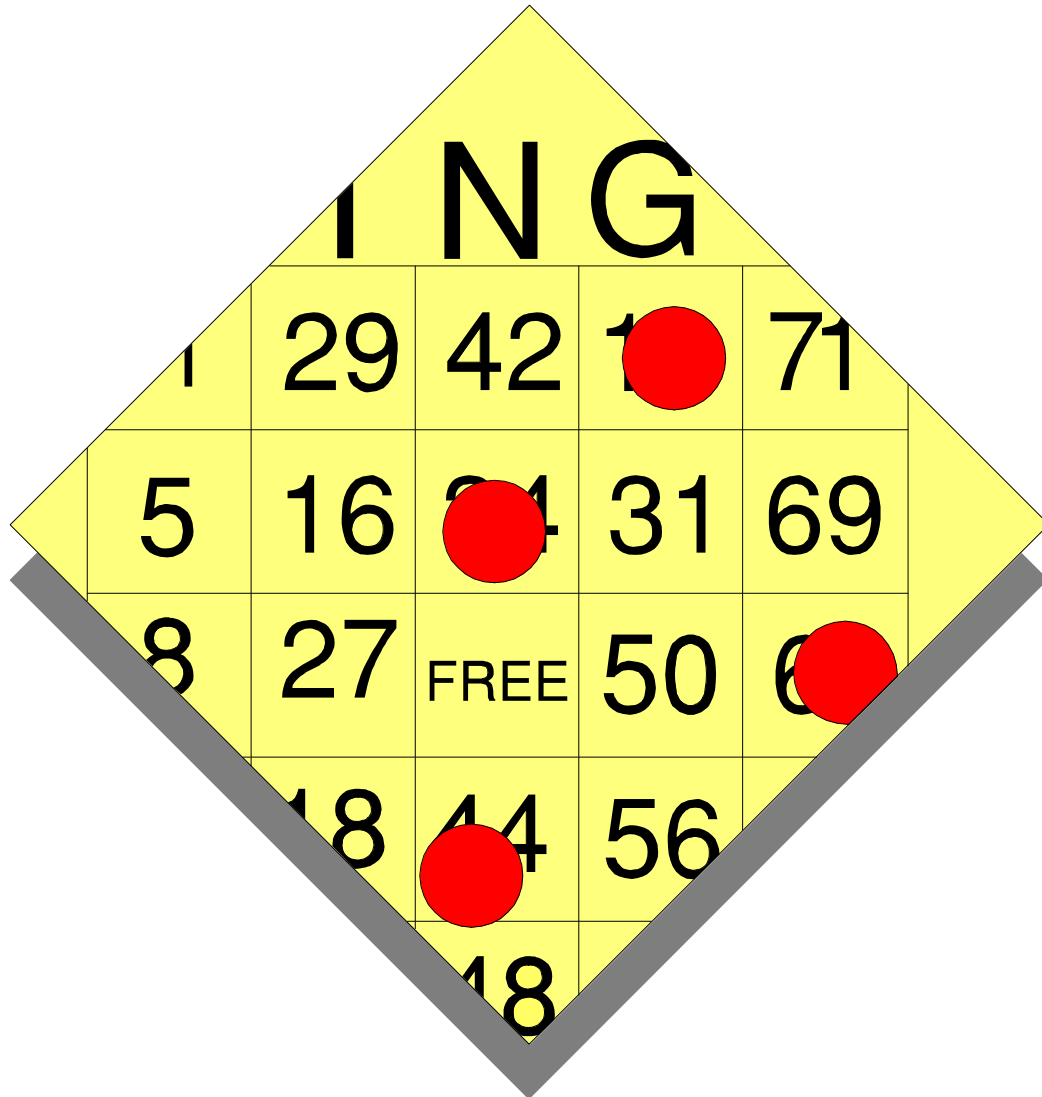
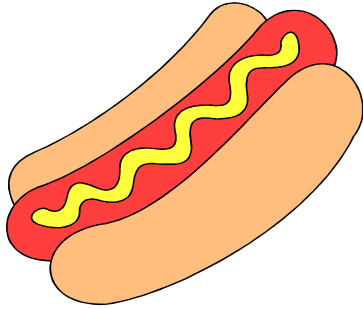


SECTION D



***LET'S PLAY
GAMES!***

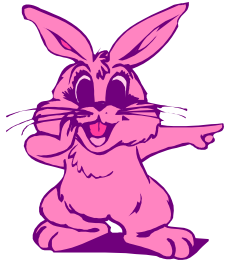


"WEENIE DROP"

From New York Chapter L, each contestant is given a hot dog, and they must hold it between their legs and walk backward to a can and then drop the hot dog into the can. They are given two tries, and each round the can gets smaller. As the contestants develop their skills, you can change from the hot dog to a walnut, just making the challenge a little more difficult!

RING AROUND THE BOOB

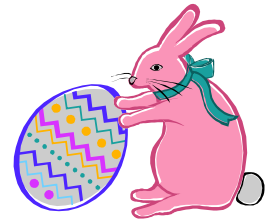
Here's another fun game from New York Chapter L. Contestants start with a rather large size bra, stuff the cups with paper, and place them over paper cups so they will stand up on their own. Each male contestant is given six wooden hoops, which they try to toss over the "boobs." They keep doing this until there is a "booby prize" winner!



EASTER EGG HUNT

Who says only kids can hunt Easter eggs? From Pennsylvania Chapter L comes this idea for how adults can also have some fun! Paint Easter eggs with numbers from 1 through 100. Place a line under numbers like 6 and 9 so you don't mistake

these for different numbers. Use your Members' homes to hide these eggs around their homes. Make a map to each Member's home, and see who can locate the most eggs. Because they're numbered, you will know if all the eggs were found. If not, ask the help of all the Members before moving on to the next house. You can arrange at the last house to have a picnic or BBQ. Let all the Members chip in for food and drink.



HOOP SHOTS

You shoot the basketball until you make a hoop and then keep shooting until you miss. The number of hoops you shoot from the first one until you miss one scores this game.

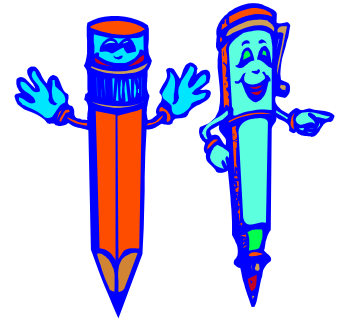
TRAVELING POKER HAND



William Jones, Pennsylvania District Director, says that when your Chapter goes visiting another Chapter in Pennsylvania, you'd better bring along a deck of cards; otherwise you can't play the Traveling Poker Hand game. It's very simple - when a group of four or more from your Chapter goes to visit another Chapter in the District you bring along the cards and ask the other Chapter Director to shuffle them. You draw one card and the card gets written on your Traveling Poker Hand sheet. After visiting four more Chapters, you send in the sheet to the District Director and, at the end of the year, the Chapter with the highest poker hand gets their chartering fee paid!

WORD SEARCH

Many Chapters include Word Search puzzles, such as the one below, in their Chapter Newsletters. Chapter participants who complete the puzzle and bring it to the next Chapter gathering are given an extra Door Prize ticket!



“MOTORCYCLE MANIA”

S L E R A P P A R E T L I F T
 G E S N E C I L I G H T S W D
 A A I M U R M O C R E T N I D
 B E E R M C C G O L D W I N G
 E M O T O R C Y C L E S V D T
 L O U Q A S P E N C A D E S O
 D R O S I T S S T E M L E H U
 D H U P A S S E N G E R F I R
 A C W E X X C R C J K O R E I
 S E K A R B D I E C O W E L N
 E Y S K W G R T A T A G V D G
 V Y R E T T A B R I N N I O R
 O H T R A I L E R S C I R B E
 L L R S I T S O W X Q W D Q Y
 G O C L U T C H G R U Q V O Z

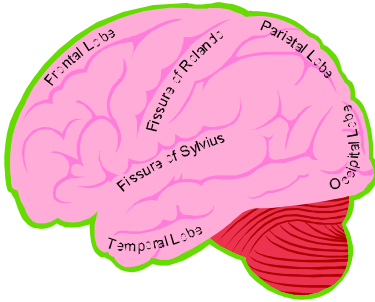
ACCESSORIES
 GLOVES
 SEAT
 BATTERY
 INTERCOM
 TRAILERS
 DRIVER

FOOTREST
 SADDLEBAGS
 BACKREST
 HELMET
 TOURING
 CLUTCH
 LIGHTS

PASSENGER
 ASPENCADES
 GWRRA
 TIRES
 CHROME
 LICENSE
 WING WORLD

APPAREL
 GOLDWING
 SPEAKERS
 BRAKES
 INTERSTATE
 WINDSHIELD
 MOTORCYCLE

BRAIN EXERCISER



Texas Chapter W submitted the following example of a "Brain Exerciser". This type of "puzzle" can be used to add a little fun to a Chapter gathering, or it could be included in the Chapter Newsletter, with the completed sheet, earning the participant an extra Door Prize ticket at the next Chapter gathering.

Brain Exerciser

What item would the following famous people purchase?

Example: Comedy Actor - Red _____ & _____ (Buttons & Bows)

1. Author - Carl _____
2. Movie Star - Burt _____
3. Country Singer - Glen _____
4. Actor - Kevin _____ & _____
5. Actress - Glenn _____ - _____
- 6.. Writer - Stephen _____
7. Actress - Barbara _____
8. Actress - Carrie _____
9. Comedy Actor - Bob _____
10. Singer/Actress - Pearl _____ ‘ _____
11. Comedy Actor - Jack _____
12. Comedy Actor - Don _____

Answers:

1. Sandburgers
2. Reynolds wrap
3. Campbells soup
4. Bacon & eggs
5. Close-up
6. King crab legs
7. Hershey bar
8. Fisher Price toy
9. Denver omelet
10. Bailey's Irish Cream
11. Lemonade
12. Knotts Berry Farm jam

BRAIN BREAK

If the last Brain Exerciser wasn't challenging enough, try this one! See if you can complete these formulas to make a correct equation.

For example: 16 = 0 in a P Answer: 16 = Ounces in a Pound

10. 26 = L of the A
10. 18 = H on a G C
10. 11 = P on a F T
10. 4 = Q in a G
10. 29 = D in F in a L Y
10. 40 = D and N of the G F
10. 32 = D F at which W F
10. 54 = C in a D (with the J's)
10. 3 = B M (S H T R)
10. 8 = S on a S S

Answers:

1. Letters of the Alphabet
2. Holes on a Golf Course
3. Players on a Football Team
4. Quarts in a Gallon
5. Days in February in a Leap Year
6. Days and Nights of the Great Flood
7. Degrees Fahrenheit at which Water Freezes
8. Cards in a Deck (with the Jokers)
9. Blind Mice (See How They Run)
10. Sides on a Stop Sign



EASTER BONNET CONTEST

Michele Verdi, New Jersey Chapter G, says to put on your thinking caps and create an EASTER BONNET! You can use your favorite fishing hat or the wildest hat you've ever seen. Make it. Buy it. Bring it to the Chapter gathering just around Easter, and have the Members look for the best hat, which can include many categories. The only rule is.... IT MUST BE WORN ON YOUR HEAD WHEN YOU ENTER AND DURING THE JUDGING!

Chapter G does many of these contests at their gatherings. Another example is their BEST BIKE MASCOT contest. They announce the winners and what the contest is for the next gathering in their newsletter so everyone who didn't attend knows what fun they missed.



MINIATURE GOLF TOUR

Set up a schedule of dates and miniature golf courses to be played. You can then plan a ride to the course or, if someone can't get to the meeting place, they could just meet at the golf course - with pre-planning, everyone could have a schedule of which course on what day.

For example:

- | | | |
|---------------------------|-------------|--------------------|
| 1. Jeto's | Mon. 7/13 | Tee Time 7:30 p.m. |
| 2. Overlook Golf and Rec. | Thurs. 7/22 | Tee Time 7:45 p.m. |
| 3. Fun Central | Wed. 8/9 | Tee Time 7:30 p.m. |

This does not have to be a weekly thing - you can do it as many times and places as you choose. The times are varied and so are the days, so that as many people as possible can attend. To add to the fun, give awards for different things - high score, low score, hole in one, etc.



SHOES IN THE STRAW

Put 20 matching pairs of men & women's shoes in a big pile of straw. If a single person is playing have them run from the starting point and find one pair of matching shoes. If a couple is playing, have them find two pairs of matching shoes. When the shoes are found, they run back to the starting point. This is a timed event and the single or couples who have the fastest time win.



HOME IMPROVEMENT RELAY

The starting point is 20 feet away from the activity and there are 3 men and 3 women on each team. The men put pillowcases on pillows and the women drive a nail flush into a board. The total time of the relay team is taken and the shortest time wins.





SCAVENGER HUNT

Lists are handed out with a start and finish date. Items could be things at District or Region Rallies, Chapter events or just silly things. NC District Rally held a Scavenger Hunt and gave cash prizes away.

WINGS OVER THE SMOKIES SCAVENGER HUNT

1ST Place	2nd Place	3rd Place
\$50	\$30	\$20

- * Find all items on the list below.
- * Turn all items in at the Scavenger Hunt table.
- * All items become the property of GWRRA.
- * All those completing the Scavenger Hunt will have his or her name entered into a drawing for the money.

HUNT LIST

1. Piece of Hard Candy
2. Signature of any District Director other than NC
3. Business card from Vendor
4. Safety Pin
5. Piece of String
6. Ball point pen
7. Packet of artificial sweetener
8. Shoelace
9. Rubber band
10. Matchbook

Registration # _____

Name _____

Address _____

City, State, ZIP _____

GWRRA BINGO

G	W	R	R	A
		FREE		

WORD LIST

RALLY	CHAPTERS	DINNER	GOLDWING
ICE CREAM	MEETINGS	RIDES	TOY RUNS
SEMINARS	SAFETY	FRIENDS	REGION
DISTRICT	MEMBERS	FUN	CHROME
LIGHTS	WINDSHIELD	COY	KNOWLEDGE
SHIRTS	CAMPING	BOOTS	GLOVES
ELECTRICS	BAKE SALES	CB	INTERCOM
FOOT PEGS	GAMES	FUEL	DOOR PRIZE
WING DING	CABIN FEVER	PINS	HANGER BARS
NEWSLETTER	WING NEWS	VESTS	NAMETAGS
SKILL DAYS	CRUISE-INS	DESSERT	AUCTIONS

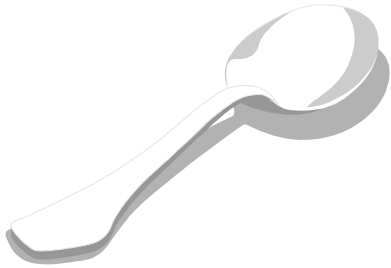
Photocopy the blank bingo form. Write in words from the list above on all the blank spaces, mixing them up on the different cards. The caller will then pick the words from a hat and call them out. Bingo winners can be across, up and down, diagonal, four corners. (From Sue White, Ohio District PR)

GWRRA Bingo can also be used as a money maker having each player buy a card for \$1.00 each.

SPEAR THE LIFESAVER

Two teams are formed with men and women alternating. Each player is given a toothpick which they put into their mouths. The first person on the team puts a lifesaver on his or her toothpick and then tries to pass the lifesaver down the line. You are not allowed to use your hands unless you drop the lifesaver.

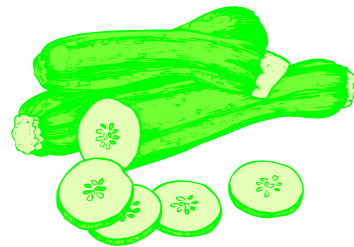
THREAD THE SPOON



Tie a VERY LONG piece of cord or yarn to the handle of a spoon. Two teams are formed and the first person on the team ties the end of the cord around his wrist. The first person threads the spoon with cord DOWN through his clothes, e.g. shirt and pants. The second person threads the spoon UP through his clothes. The third person goes DOWN, fourth goes UP, etc. When the spoon gets to the end of the line then it must be UNTHREADED. The team that unthreads the spoon first, wins.

PASS THE CUCUMBER

Two teams are lined up alternating men and women and spouses do not stand together. A cucumber is passed between their knees and the team members are not allowed to use their hands for balance. If the cucumber does drop, they can pick it up and start where it dropped.



BUCKET BRIGADE



The object of this game is for one team to end up with the most water in their bucket. There are 6 people on each team in any combination of players and each team forms a straight line. There is a large bucket of water at the beginning of each line and a large empty bucket at the end of each line. Team player #1 is given a smaller empty bucket. At the bell, player #1 fills the bucket up with water and passes it to player #2 and on to #3, etc. Player #6 empties the water into the empty bucket and then passes the empty bucket back up the line to #1, who starts all over again. When time is called, the height of the water in the last large bucket is measured and that team wins.